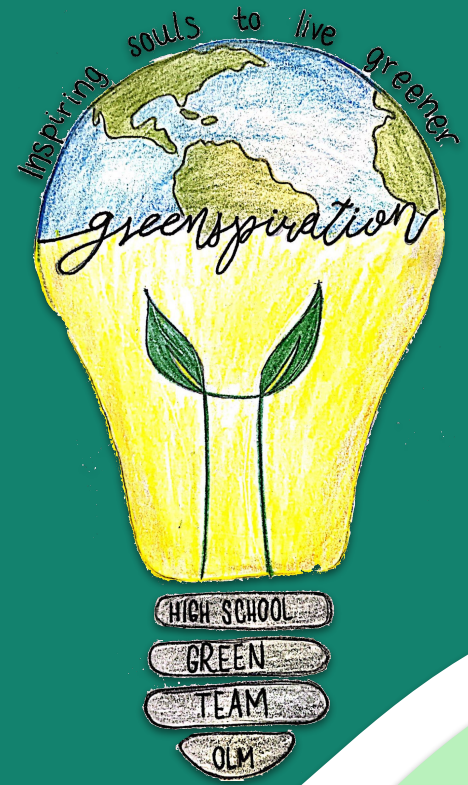


EmerGINcy - Medellín, Colombia

Greenspiration

Our Lady of Mercy School
Rio de Janeiro



High School Green Team

- A group of High School students passionate about making a change in OLM
- Theme: Greenspiration
 - Inspired by GIN → we want to inspire others





*Meatless
Mondays*



"Meatless Monday is a global movement with a simple message: one day a week, cut the meat."

For more information: www.meatlessmondays.com

Why Meatless Mondays?

Health Benefits

- Rich in fiber, vitamins and other nutrients
- Reduces the risk of cancer, heart disease, diabetes, and obesity

Global Warming

- Meat industry accounts for nearly one-fifth of human-made greenhouse gas emissions

Water Crisis

- Livestock requires much more water to raise than fruits and vegetables

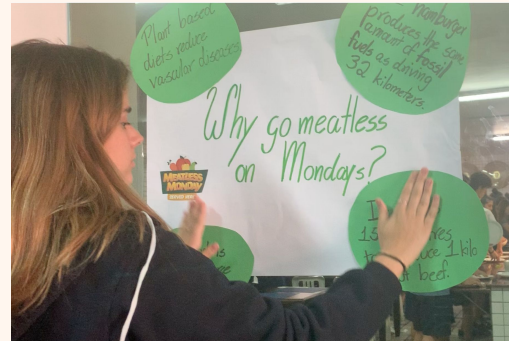
Deforestation

- Most tropical rainforests are being deforested to open land for raising stock

For more information: www.peta.org

Meatless Mondays at OLM!

- **School nutritionist** - special menu on Mondays with vegetarian options
- **School campaign** - posters around school cafeteria and lectures with classes



Meatless Mondays at OLM!

On Mondays, choose the vegetarian
option and help make a difference!

FOOD WASTE



Food Waste and Food Loss

- Food Loss Index (FLI) & Food Waste Index (FWI)



1.3 billions tons

Food wasted or lost annually, representing
1/3 of world's food (FAO ,2011)



\$750 billion dollars

Wasted by producers in food wastage



3.3 billion tons

Of greenhouse gases, making food
wastage the 3rd top GHG emitter



870 million people

Go hungry everyday

Environmental Effects

Wastes Water

Millions of gallons of water used to plant, grow, or produce food goes to waste

Wastes Oil and Land

When food is wasted, the fuel and land used in food production or transportation go with it

Releases Methane

Food that ends up in landfills decompose, releasing the greenhouse gas

Harms Biodiversity

Deforestation and marine fisheries exploit natural habitats



Awareness Campaign

- Green day
- Gymkhana at school spirit week
- Posters and signs to prevent food waste

Gymkhana Results

	Gymkhana Food Waste (kg)				
Grade	9th	10th	11th	12th	Total
Sep. 30 - Oct. 03	0.81 kg	1.22 kg	0.6 kg	0.5 kg	2.13 kg

	Food Waste (kg)				
Date	Monday	Tuesday	Wednesday	Thursday	Total
Nov. 04 - 07	2.1 kg	2.7 kg	3 kg	2 kg	9.8 kg



HIGH SCHOOL GREEN TEAM

The Bee Change Project

Bee the change you want to see in the world

Importance of Bees

- 🐝 71/100 crop species depend on the pollination of bees
 - These crop species provide 90% of food worldwide
- 🐝 $\frac{1}{3}$ bites of food depend on pollinators (bees)
- 🐝 Bee pollination is worth between \$37 billion and \$97 billion



The Problem

POPULATION DECLINE



COLONY COLLAPSE DISORDER



CAUSES OF THE DECLINE OF BEE POPULATIONS

- 🐝 Agricultural pesticides
- 🐝 Harmful parasites, like mites
- 🐝 Rising CO₂
- 🐝 Habitat loss
- 🐝 Stress Bees experience
- 🐝 Inadequate forage



Consequences

OF POPULATION DECLINE



SHORT-TERM

Consequences

🐝 Since 2010: loss of 37.8%
US colonies each year

🐝 Risk of extinction

- Extinction rates are 100
to 1000 times higher
than normal



LONG-TERM

Consequences



→ Without bees:



87 of the world's food crops would be affected



US honeybees: contribute \$15 Bi



Food could become more expensive or disappear



Crops would lose quality



Dairy, coffee, cotton, almonds



Your produce choices
without bees





What can we do to help?

PRESERVATION MEASURES

Preservation

HOW CAN YOU HELP?



Demand political action

- o Reduce the use of insecticides



No insecticides or pesticides



Stop being afraid



Role of Citizens and Companies



Stop pesticide use



Monitor the
Varroa mite



Care for the
environment



Support local
gardeners

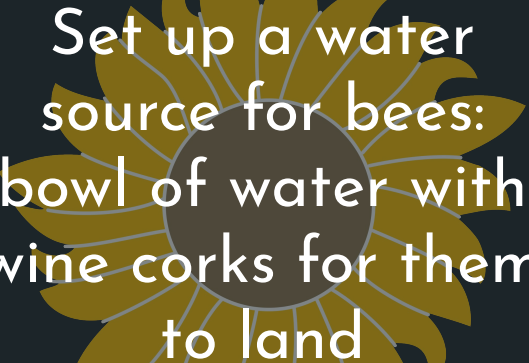
Plant a bee garden!



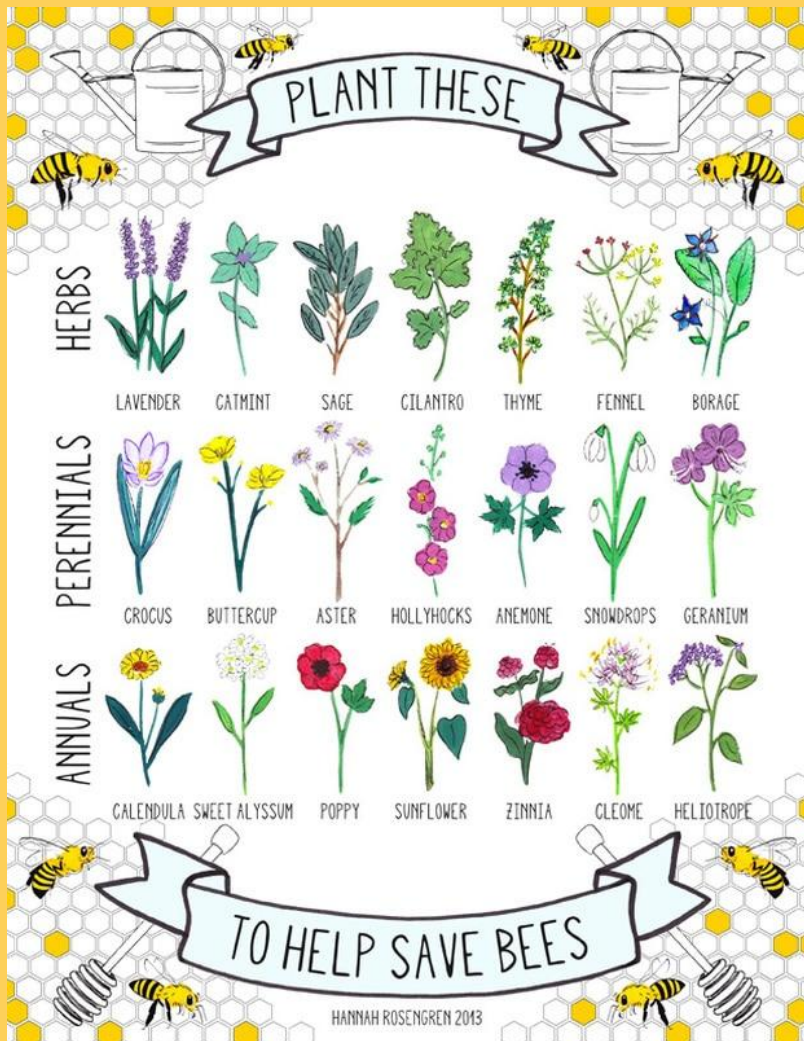
Plant flowers
that attract
bees



Use natural
herbicides and
fertilizers



Set up a water
source for bees:
bowl of water with
wine corks for them
to land



Recycled can + hollow twigs: DIY house for bees

Our Goal

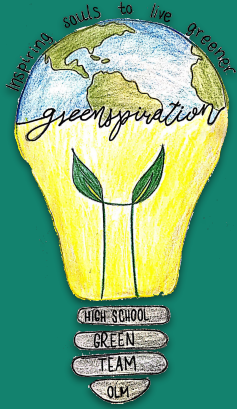
 Raise awareness on the decline of bee populations

 Inspire students to make a change

- o Green Day

 Install preservation measures in OLM

- o Planting flowers



Actions

Greenspiration

Green Day



Cafeteria



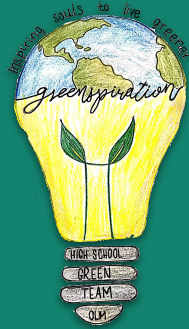
Video



Spirit Week Gymkhana



EmerGINcy – Medellín, Colombia



Thank you for your time!

Our Lady of Mercy School
Rio de Janeiro